

AutoScan Inspec2

Automatic Desktop 3D Scanner



Metrology-Grade Accuracy

With a scan accuracy of 0.01 mm, it ensures consistent, reliable results for complex small objects.



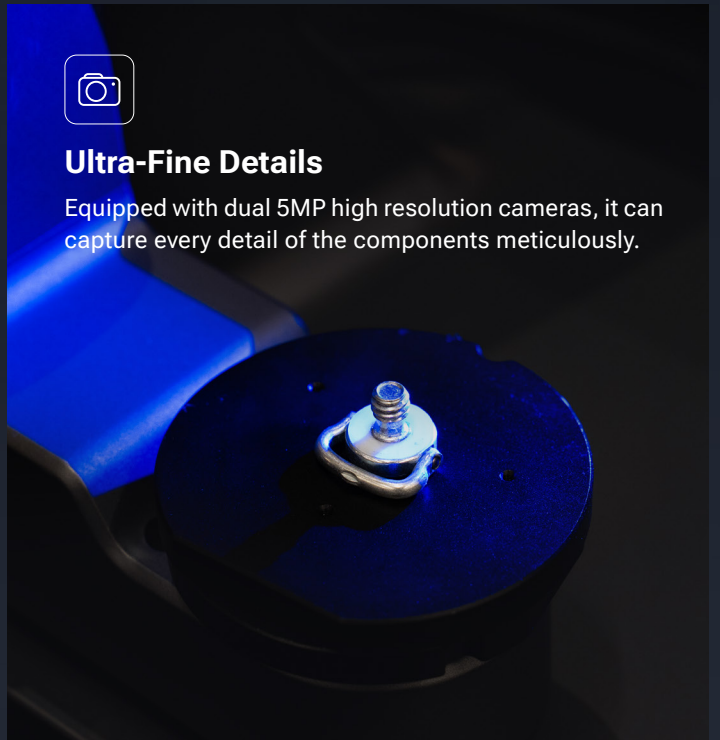
Full Color Scanning

Captures true-to-life colors to ensure accurate texture reproduction for enhanced inspection, documentation, and digital modeling for various applications.



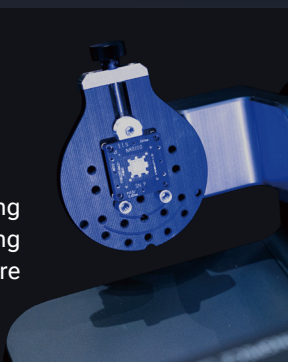
Ultra-Fine Details

Equipped with dual 5MP high resolution cameras, it can capture every detail of the components meticulously.



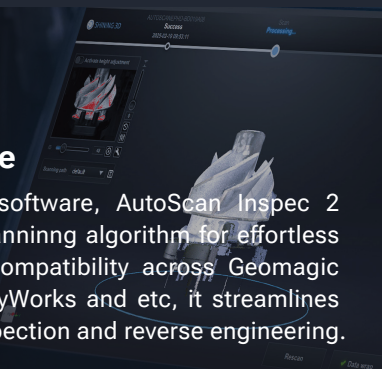
Automatic & Efficient

Features 3-axis turntable, enabling hands-free, multi-angle scanning with one-click operation to capture data efficiently.



Advanced Software

Powered by UltraScan software, AutoScan Inspec 2 delivers AI intelligent scanning algorithm for effortless operation. With broad compatibility across Geomagic Control X, Design X, PolyWorks and etc, it streamlines workflows for quality inspection and reverse engineering.



Compact & Lightweight

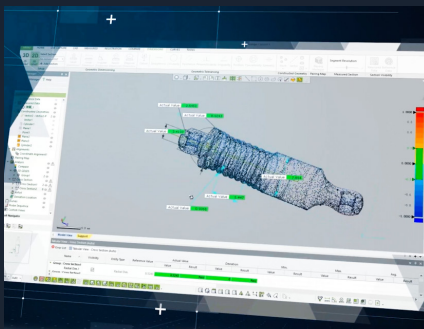
Weighing only 5 kg, its streamlined, space-saving design makes it easy to integrated into laboratories, workshops, and industrial environments.

Only **5 kg**

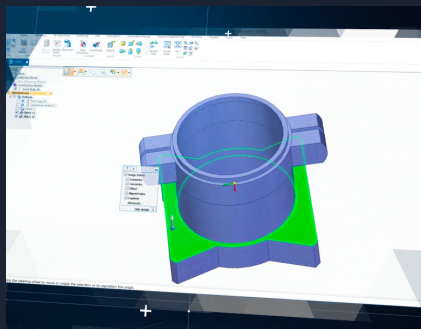


Versatile Applications

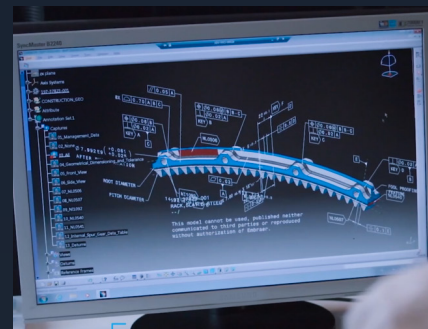
• Quality Control



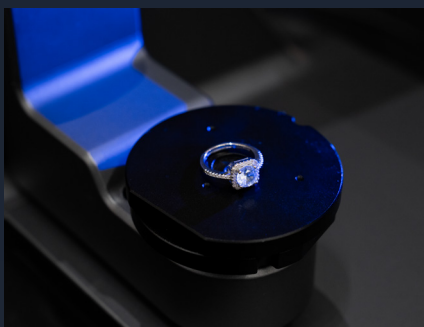
• Reverse Engineering



• Product Design



• Jewelry



• Heritage Preservation



• Healthcare



Specifications

Product	AutoScan Inspec2
Accuracy	0.01 mm
Field of view	140 × 90 × 80 mm
Align mode	Feature, Markers
Point distance	0.05 mm
Rotation axis	3 Axis
Camera resolution	2 × 5MP
Light source	LED blue light
Color scan	Supported
Dimensions	420 × 260 × 270 mm
Weight	5 kg
Power	DC 24V
Work temperature	0 ~ 40 °C
Operation system	Windows 10 / Windows 11 (64 bits)
Output format	STL, OBJ, PLY
Certification	CE, FCC, ROHS, WEEE, KC



+91 98404 78347 | +91 63744 06179

www.precise3dm.com

Chennai | New Delhi | Bangalore | Mumbai | Vadodara | Coimbatore | Pune | Indore