



SHINING 3D


# EinScan<sup>®</sup> HX


Hybrid Blue Laser & LED Light Source  
Handheld 3D Scanner





# EinScan HX


Based on years of 3D measurement experience and market demand, SHINING 3D innovatively integrates blue LED light and blue laser into EinScan HX handheld 3D scanner. The hybrid laser and LED light sources make EinScan HX compatible with a wider range of object sizes, meeting multiple needs of users. High efficiency and reliable result give EinScan HX more application possibilities.

 Hybrid Blue Laser & LED Light

 High Efficiency

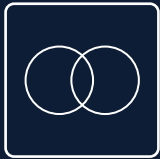
 Reliable Results

 Portable & Easy Operation

 Full Color

 PRECISE 3DM





## Hybrid Blue Laser & LED Light

Innovatively integrated with dual blue LED light and blue laser, improves scanning materials adaptability with less limitation for a wider range of applications.

LED light scanning allows rapid 3D scanning.

Laser scanning, which is less sensitive to ambient light, gives better performance to reflective and dark color surface.

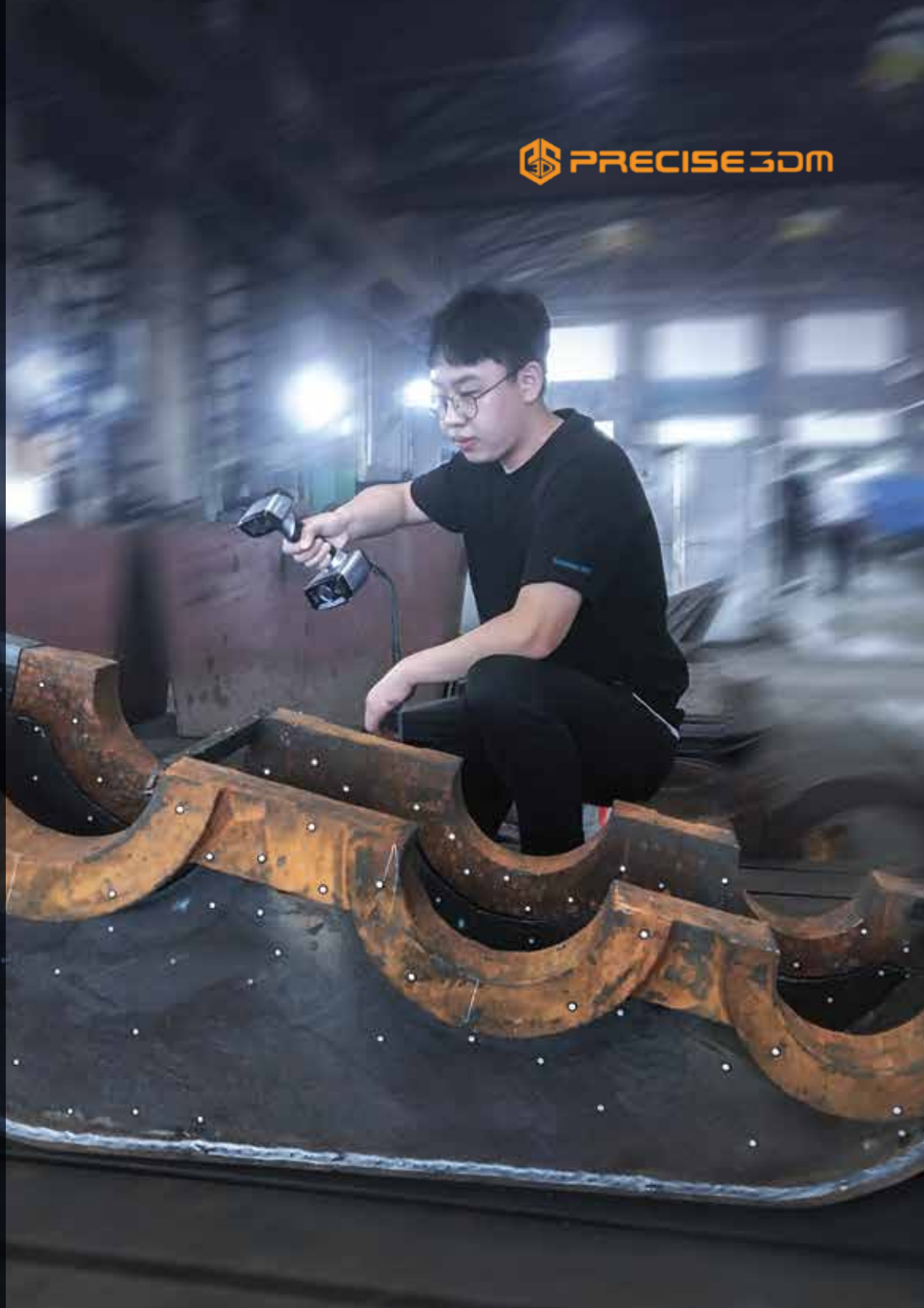
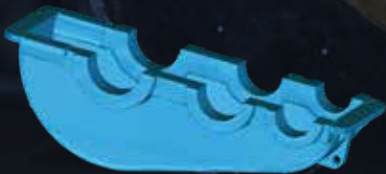
Based on years of 3D measurement experience and market demand, SHINING 3D innovatively integrates blue LED light and blue laser into EinScan HX handheld 3D scanner. The hybrid laser and LED light sources make EinScan HX compatible with a wider range of object sizes, meeting multiple needs of users. High efficiency and reliable result give EinScan HX more application possibilities.





## High Efficiency

Processing speed of EinScan HX under Rapid Scan Mode is up to 1,200,000 points/s, and multiple blue laser lines under Laser Scan Mode makes scanning of most objects in minutes for reverse engineering, CAD/CAM, 3D printing and etc.



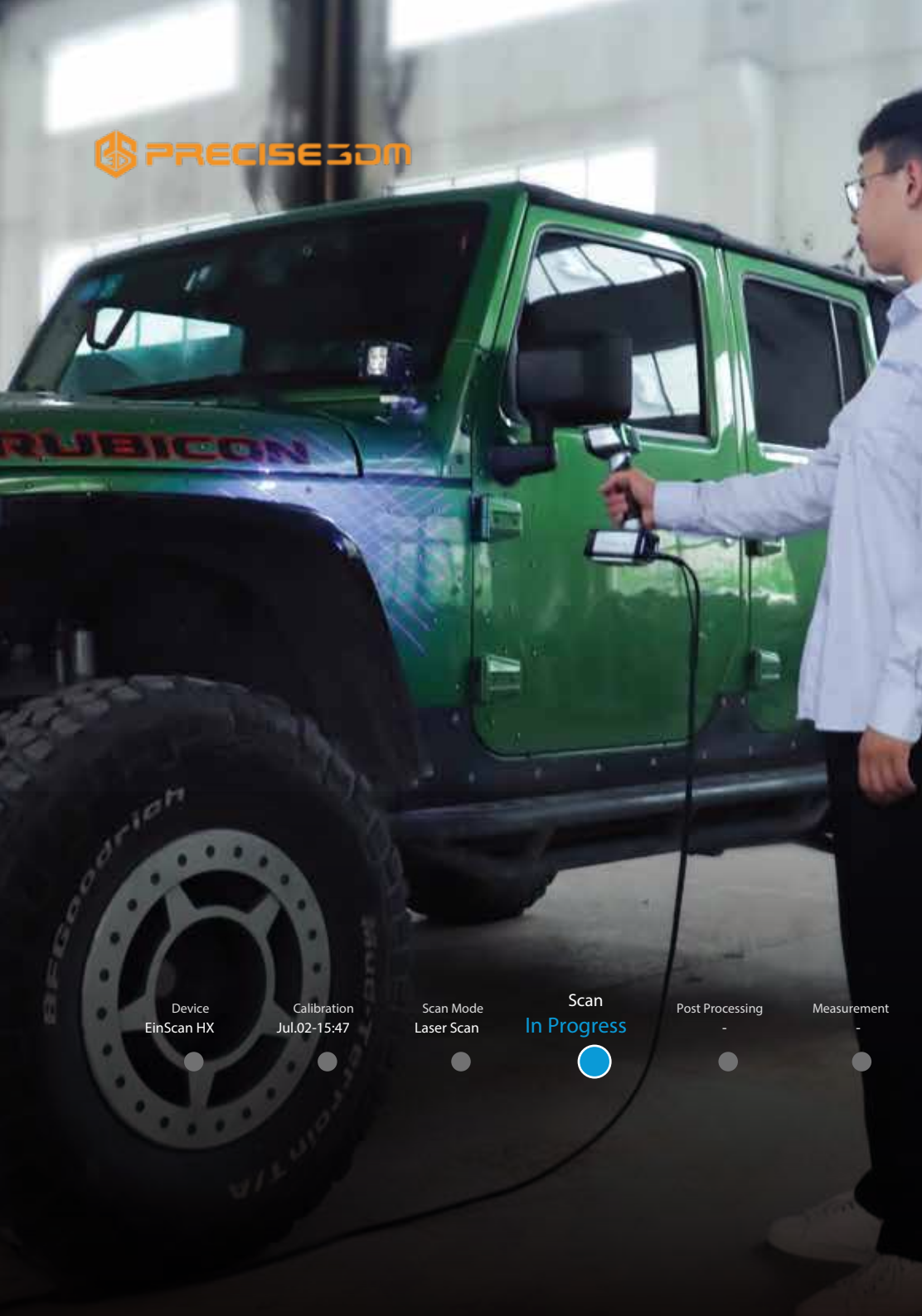


### Reliable Results

The high resolution and accuracy meet the needs of most industrial application for reverse engineering and measuring.

Minimum point distance of 0.05 mm;  
accuracy up to 0.04 mm under laser mode





## Portable & Easy Operation

EinScan HX is plug and play with user friendly software, which is easy to operate, no matter you are newbie or with professional experience in 3D scanning. The portability and flexibility use of EinScan HX has been considered to its ergonomic design for a more efficient and comfortable scanning experience.

Device  
EinScan HX

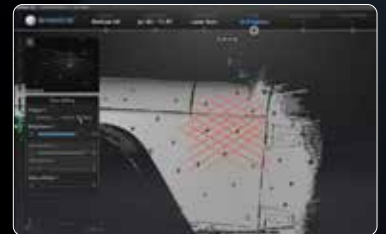
Calibration  
Jul.02-15:47

Scan Mode  
Laser Scan

Scan  
In Progress

Post Processing  
-

Measurement  
-





### Full Color

With built-in color camera, it supports full color texture capturing and tracking by texture.



# EXModel

EXModel is a powerful bridge that simplifies CAD modeling from 3D scanning to manufacturing. With the integration of EXScan HX, you can now seamlessly import data to EXModel with a single click after completing a scan. EXModel offers a comprehensive set of tools that enable you to create professional-grade CAD digital models that are compatible with your CAD software.



Effortless Mesh Processing



Precision CAD Creation

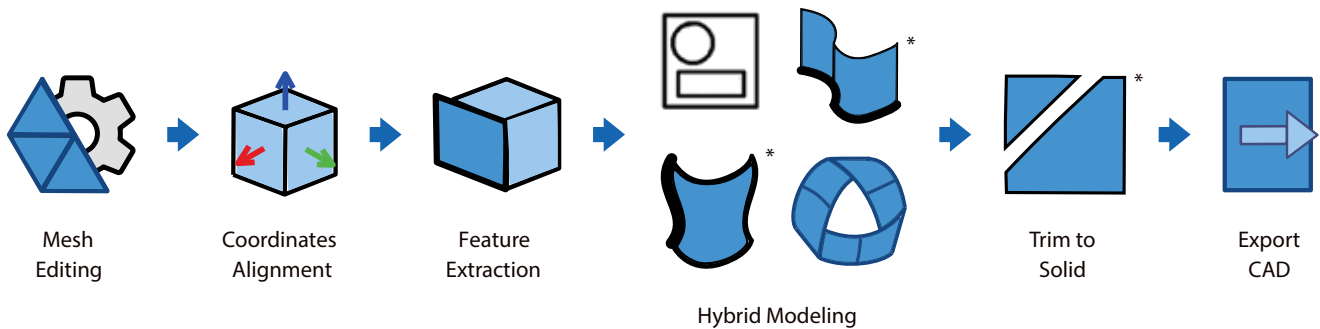


Enhanced Data Utilization



Cost-Effective Solution

## Workflow



\*30 days Free Trial is available to apply to EXModel.

\*Function features marked with asterisk are available in EXModel Pro.



# APPLICATIONS

---



Automotive



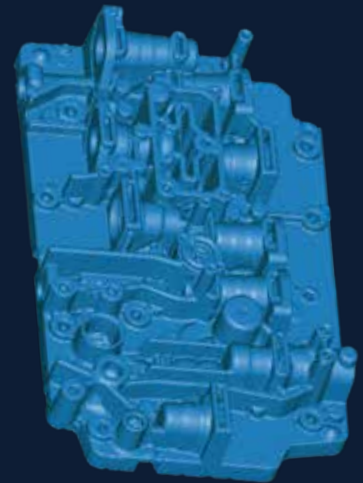
Shipbuilding



Machining



Education and Research



# TECHNICAL SPECIFICATIONS

## EinScan HX

Scan Mode	Rapid Scan	Laser Scan
Scan Accuracy	Up to 0.05mm	Up to 0.04mm
Volumetric Accuracy*	0.05+0.1mm/m	0.04+0.06mm/m
Scan Speed	1,200,000 points/s 20FPS	480,000 points/s 55FPS
Camera Frame Rate	55FPS	55FPS
Align Mode	Feature Alignment, Markers Alignment, Texture Alignment, Hybrid Alignment	Markers Alignment
Working Distance	470mm	470mm
Depth of Field	200mm-700mm	350mm-610mm
Max FOV	420mm*440mm	380mm*400mm
Point Distance	0.25mm - 3mm	0.05mm-3mm
Light Source	Blue LED	7 Blue Laser Crosses
Safety	Eye-safe	Class I (Eye-safe)
Built-in Color Camera	Yes	
Texture Scan	Yes	No
Connection Standard	USB3.0	
Output Formats	OBJ; STL; ASC; PLY; P3 ; 3MF	
Dimensions	108mmx110mmx237mm	
Weight	710g	
Operating Temperature Range	0-40	
Operating Humidity Range	10-90%	
Certifications	CE, FCC, ROHS, WEEE, KC	
Recommended Configuration	OS : Win10, 64 bit ; Graphics card : NVIDIA GTX/RTX series cards, higher or equal to GTX 1080 ; Video memory : ≥4G ; Processor : I7-8700 ; Memory : ≥32GB	



**PRECISE 3DM**  
Digital Manufacturing Solutions



9840478347 | 6374410703



sm@precise3dm.com | sales@precise3dm.com



[www.precise3dm.com](http://www.precise3dm.com)



Chennai | New Delhi | Bangalore | Mumbai |  
Varodhara | CBE | Pune | Indore