



reddot winner 2024

FreeScan UE Pro

Multi-Functional Laser Handheld 3D Scanner

For High Precision Metrology-Grade Inspection





FreeScan UE Pro

FreeScan UE Pro inherits the high-precision, metrology-grade accuracy, and lightweight design of FreeScan UE, while improving the ability of fine scanning and global precision control of large-scale workpiece scanning. It adopts 26+7+1 blue laser lines and integrates a photogrammetric module. Taking into account speed, accuracy and details, this professional 3D metrology solution can be applied to different sized scanning scenarios and perform metrology-grade accuracy inspection, reverse design, additive manufacturing and other applications.



Scale Bar

**Patented built-in scale bar
photogrammetry module
increases volumetric accuracy**



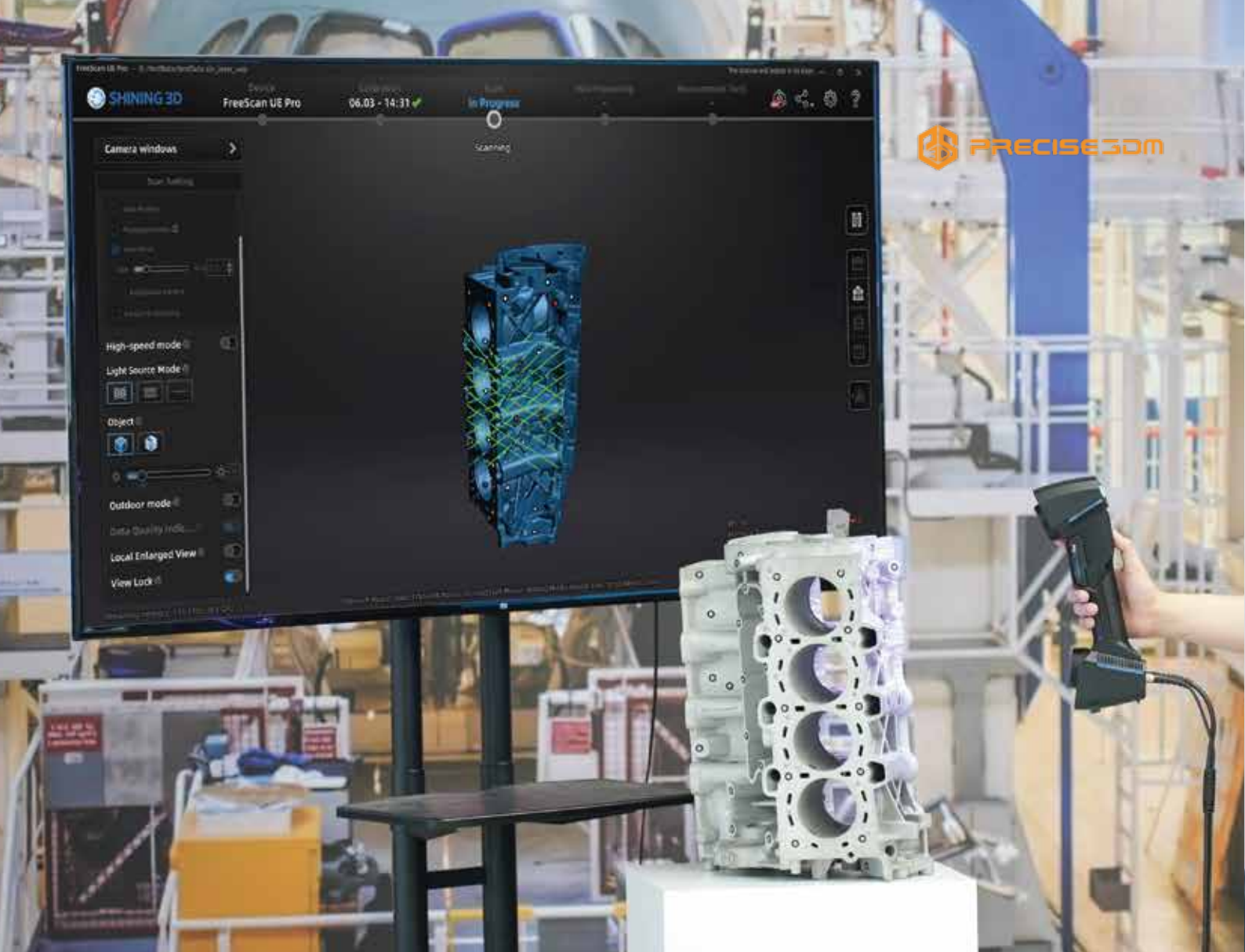
Metrology-Grade High Accuracy

Accuracy up to 0.02mm, delivers consistent scanning results with high precision.



Global Precision Control

Integrated photogrammetry function no need to apply coded targets, quickly locks the spatial position of the target frame.



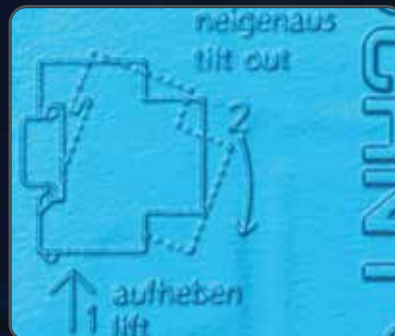
Multiple Scanning Modes

13 cross laser lines to scan large objects quickly, 7 parallel laser lines to scan fine details and single laser line for deep hole and pocket area scanning.



Easy Operation

Inheriting the lightweight and ergonomic design of the UE series, the user-friendly scanning software enables an easy operation and shortens the learning curve.



Shell of Air Switch (3D data)



Prototype Card with Texture (3D data)



Wide Range of Material Adaptations

Supports scanning of black and high-reflective surfaces, more efficient scanning process.



Fine and Rich Details

With higher resolution cameras and 7 parallel laser lines, FreeScan UE Pro enables rich feature object scanning and restores fine details more accurately.

APPLICATIONS



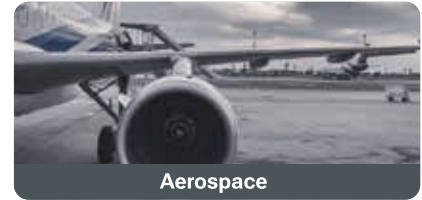
Automotive

- Vehicle appearance design
- Supply chain quality management
- Production quality control
- Car modification



Railway Transportation

- Modeling design
- Production line assembly and debugging
- Overall size control
- Workpiece repair and maintenance



Aerospace

- Aircraft structure inspection
- Interior design
- Engine inspection
- Maintenance and operation



Energy Manufacturing

- Reverse engineering design
- Fluid dynamics analysis
- Deformation analysis
- Impeller blade inspection



Mold Inspection

- Virtual assembly
- Wear analysis and maintenance
- Quality control
- Fixture design



Machine Manufacturing

- Quality inspection and control
- Tool and mold adjustment
- Rapid prototyping inspection
- OEM and old parts remanufacturing

Software Update Sharing



3D Design Software



3D Inspection Software



**Geomagic Control X
Essentials**



Over-the-Air-Update

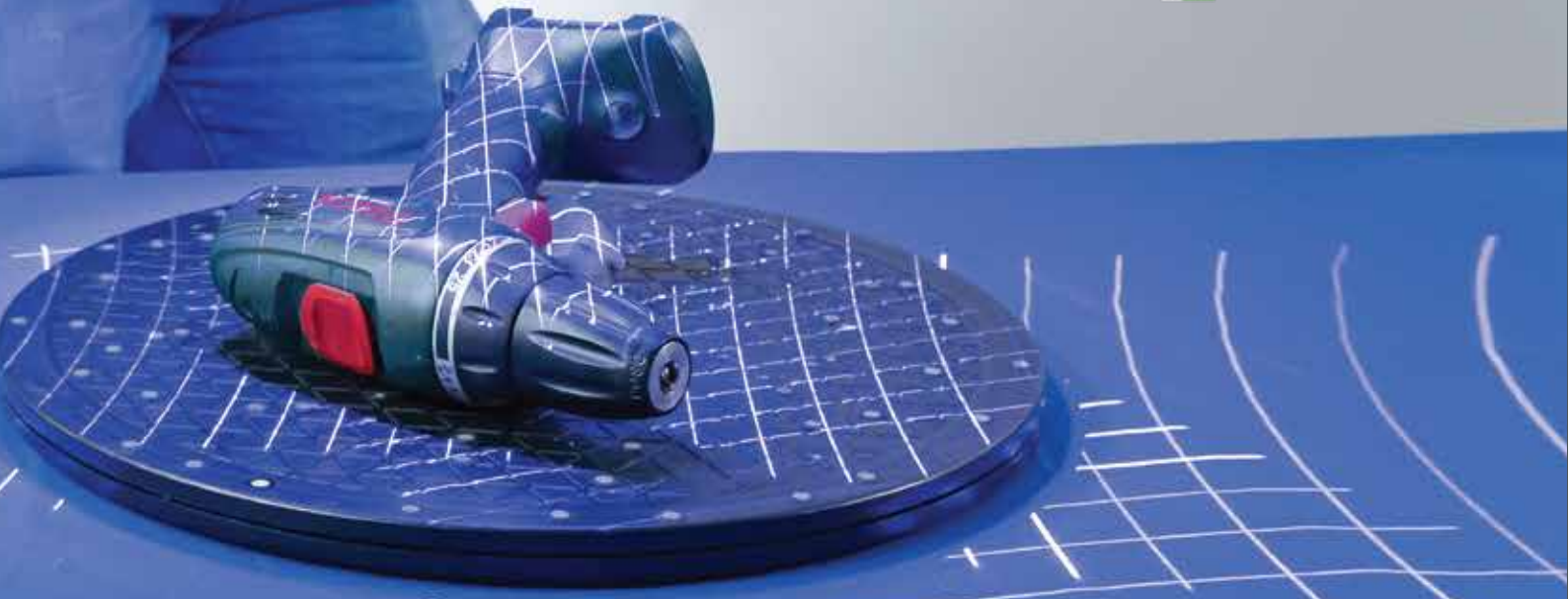
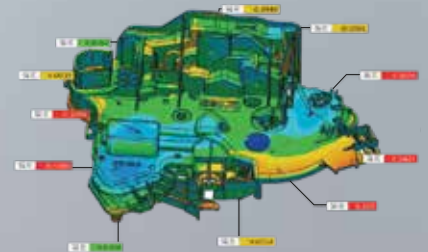
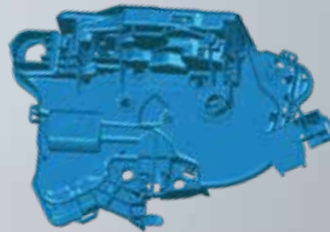
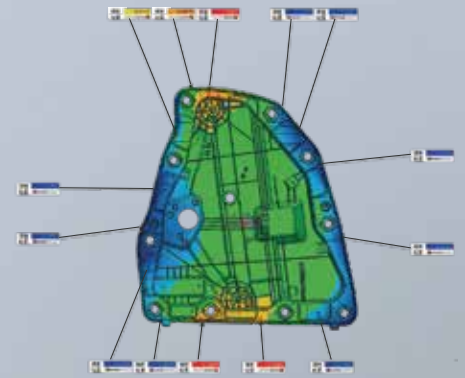
Whenever there is a new update, a notification pops up to enable a direct download of the free software.



Seamless docking to inspection and design software

The scan data can be imported into all mainstream 3D inspection and design software programs, such as Geomagic Control X, Geomagic Design X, and Verisurf Inspect with one click, improving the workflow efficiency.

3D INSPECTION



SPECIFICATION



Product Model	FreeScan UE Pro	
Scan Mode	Multiple Lines Scan, Single Line Scan	Fine Scan
Light Source	26 laser lines + single laser line	7 parallel laser lines
Scan Accuracy	up to 0.02 mm	
Scan Speed	1,850,000 points/s	
Working Distance	300 mm	200 mm
Scan Depth	170 mm ~ 680 mm	
Max. Scan Range	600 mm×550 mm	
Point Distance	0.01 - 10 mm	
Photogrammetry	Built-in scale bar photogrammetry mode	
Volumetric Accuracy*	0.02+0.03 mm/m (standard mode); 0.02+0.015 mm/m (built-in photogrammetry mode)	
Laser Class	Class II (eye safe)	
Connection Standard	USB 3.0	
Dimension	298 mm x 103.5 mm x 74.5 mm	
Weight	840 g	
Power Input	12 V, 5.0 A	
Working Temperature	-20 ~ 40°C	
Working Humidity	10 ~ 90%	
Certification	CE, FCC, ROHS, WEEE, KC, FDA, UKCA, IP50, TELEC, TISAX	
Accuracy certification	VDI/VDE 2634 Part3 (certificated in ISO 17025 certificated accuracy lab)	
Recommended Computer Configuration	OS: Win10, 64 bit; Graphics card: NVIDIA GTX/RTX series cards, higher or equal to GeForce RTX 3060; Video memory: ≥6 G; Processor: I7-8700; Memory: ≥32 GB	

Note: SHINING 3D reserves the right to explain and modify the parameters and pictures described in this product brochure.

Contact US

Email Us : sm@precise3dm.com

Mobile : 99403 52575 / 98404 78347

Website : www.precise3dm.com